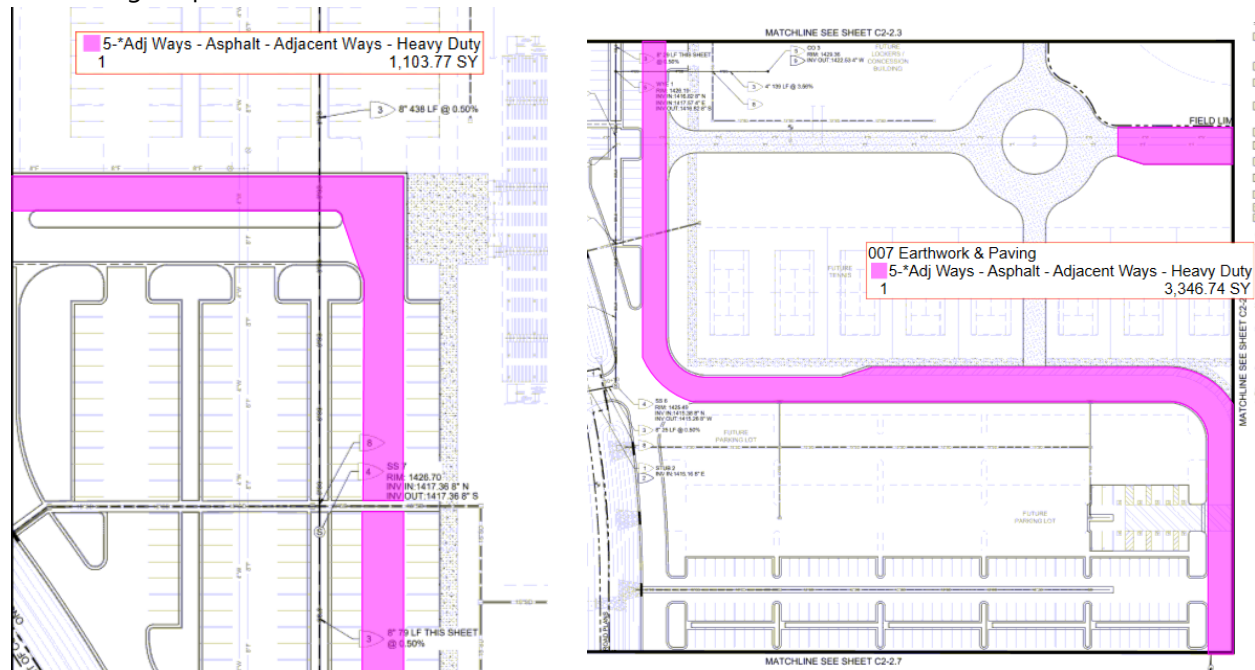


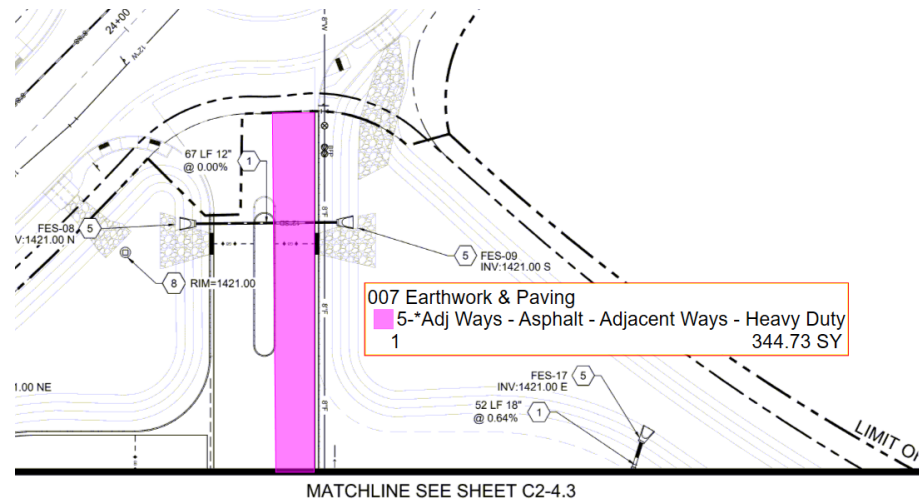
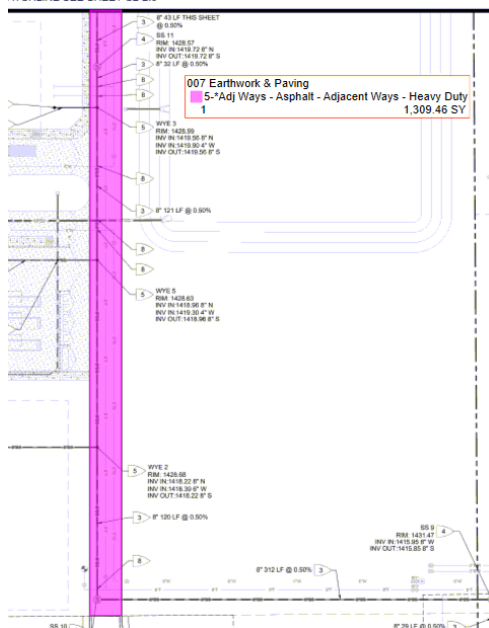
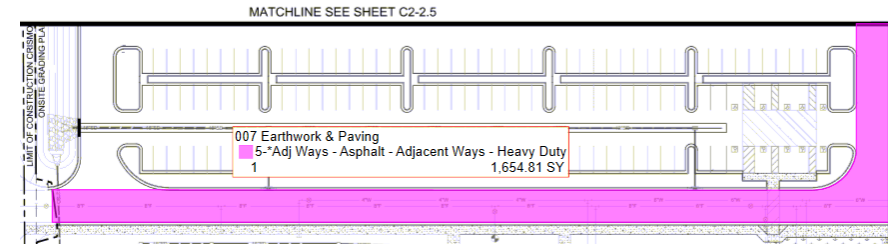
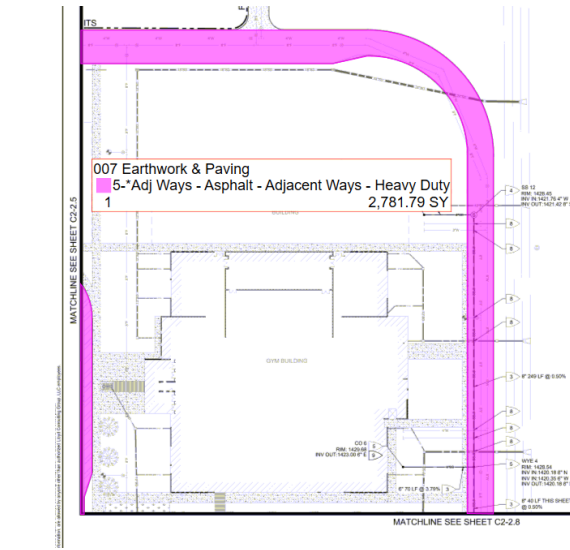
## Basis of Adjacent Ways – Queen Creek High School #3 - GMP #2 – Site Portion of Work

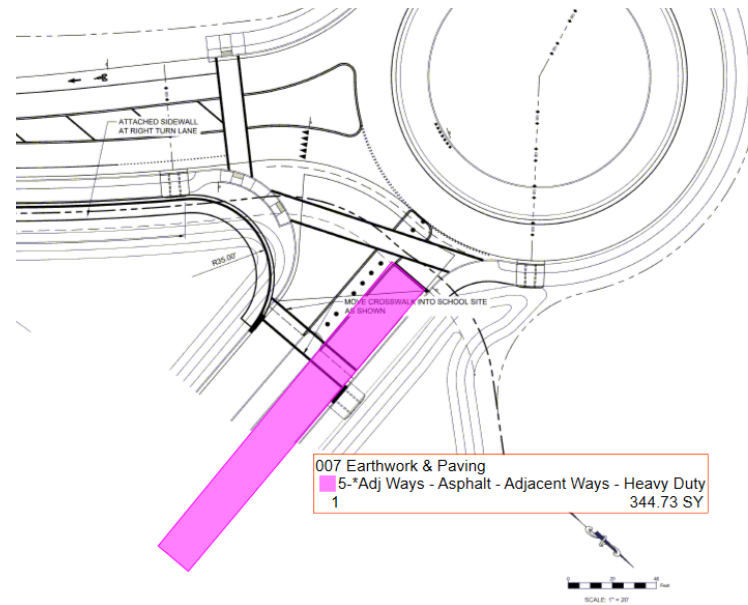
This cost is to cover the Bus and Fire equipment access lanes throughout the site. The scopes of work that fall within these boundaries are as follows: Surveying & Staking, Earthwork & Paving, Signage & Striping, and Site Concrete.

### A. On-Site Adjacent Ways

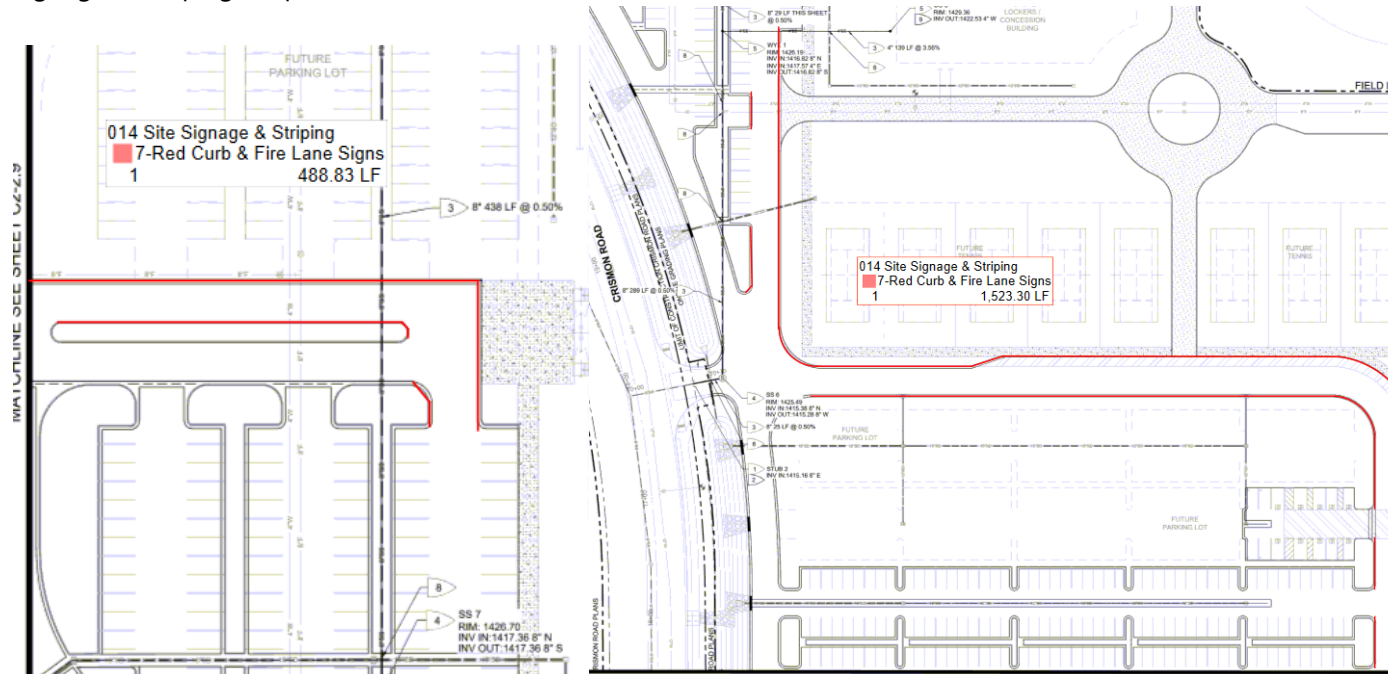
A1.1 Earthwork & Paving Scope of work as outlined on C2-2.3; C2-2.5; C2-2.6; C2-2.7; C2-2.8; C2-2.9; C0-4.2

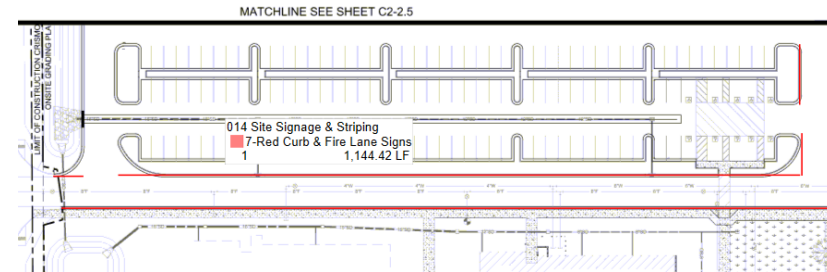
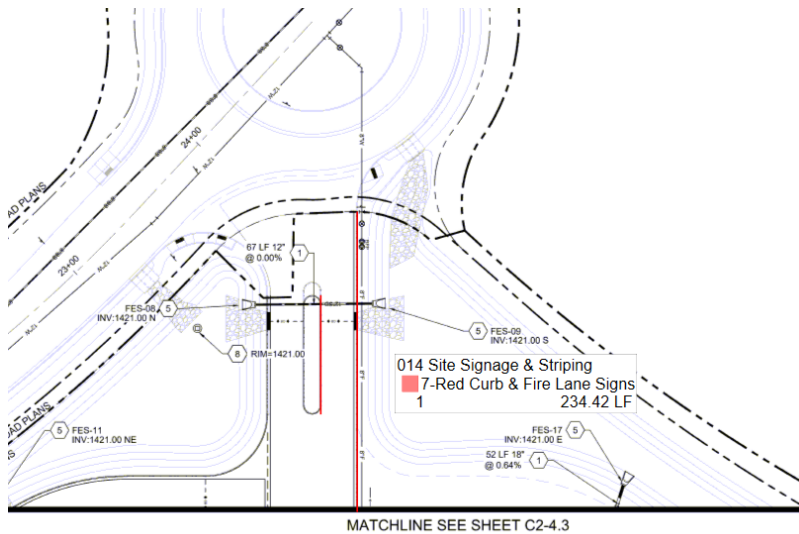




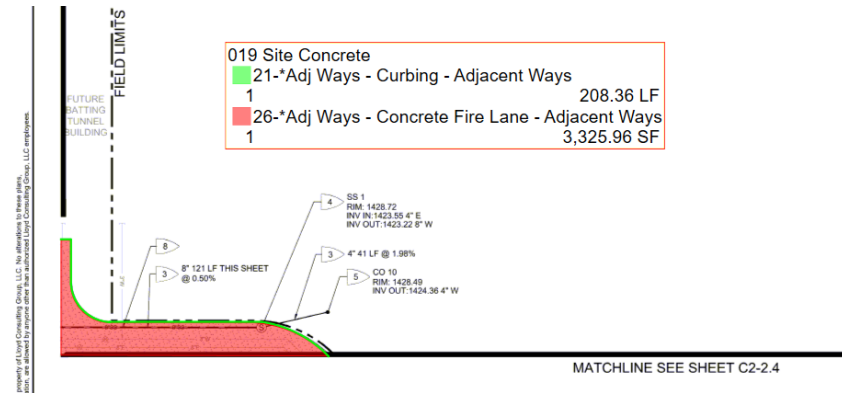
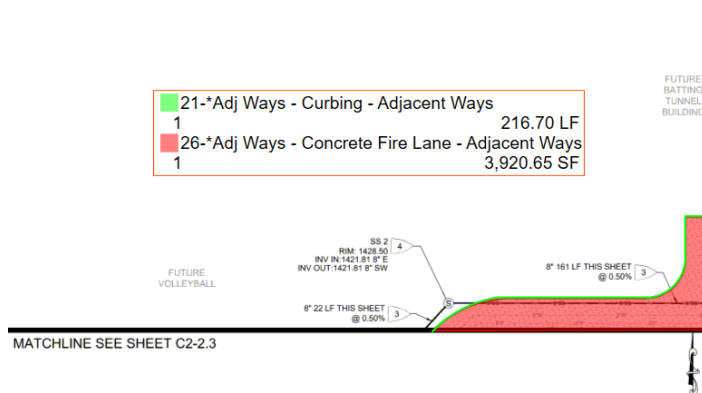


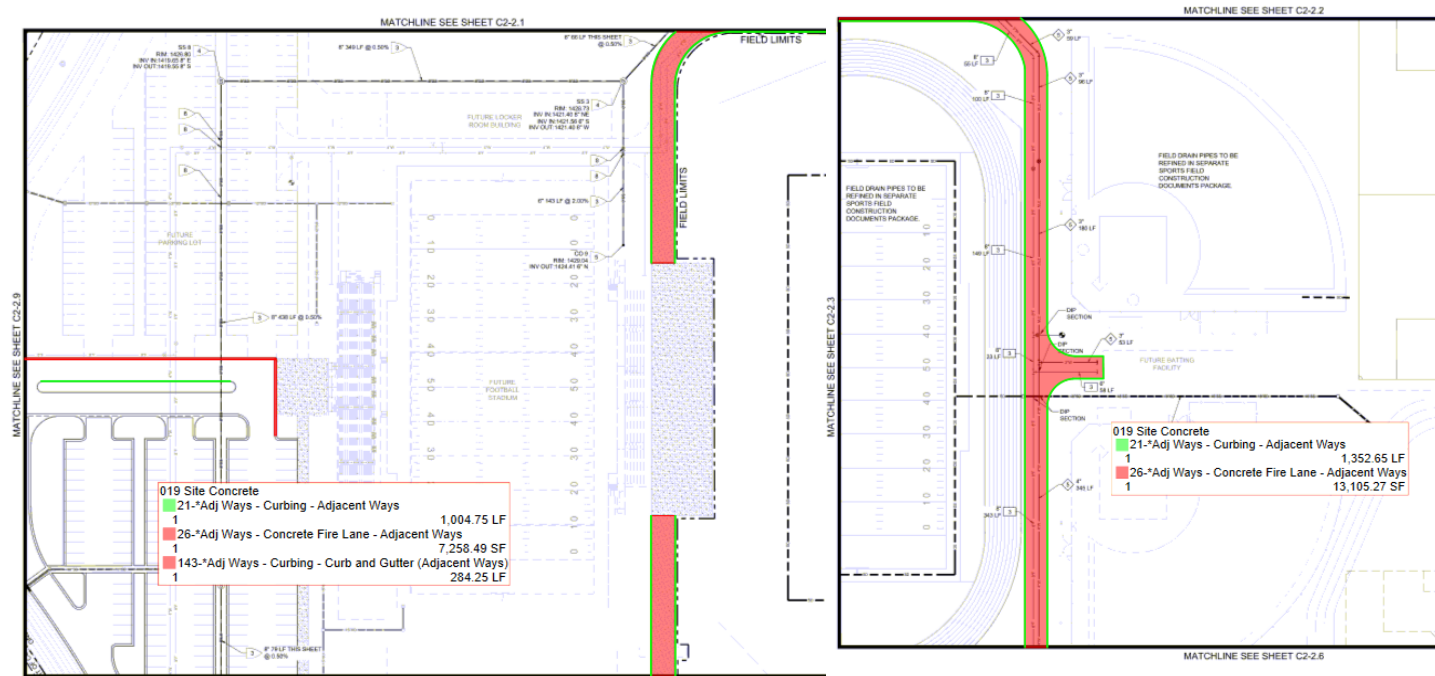
A1.2 Site Signage & Striping Scope of work as outlined on C2-2.3; C2-2.5; C2-2.7; C2-2.9

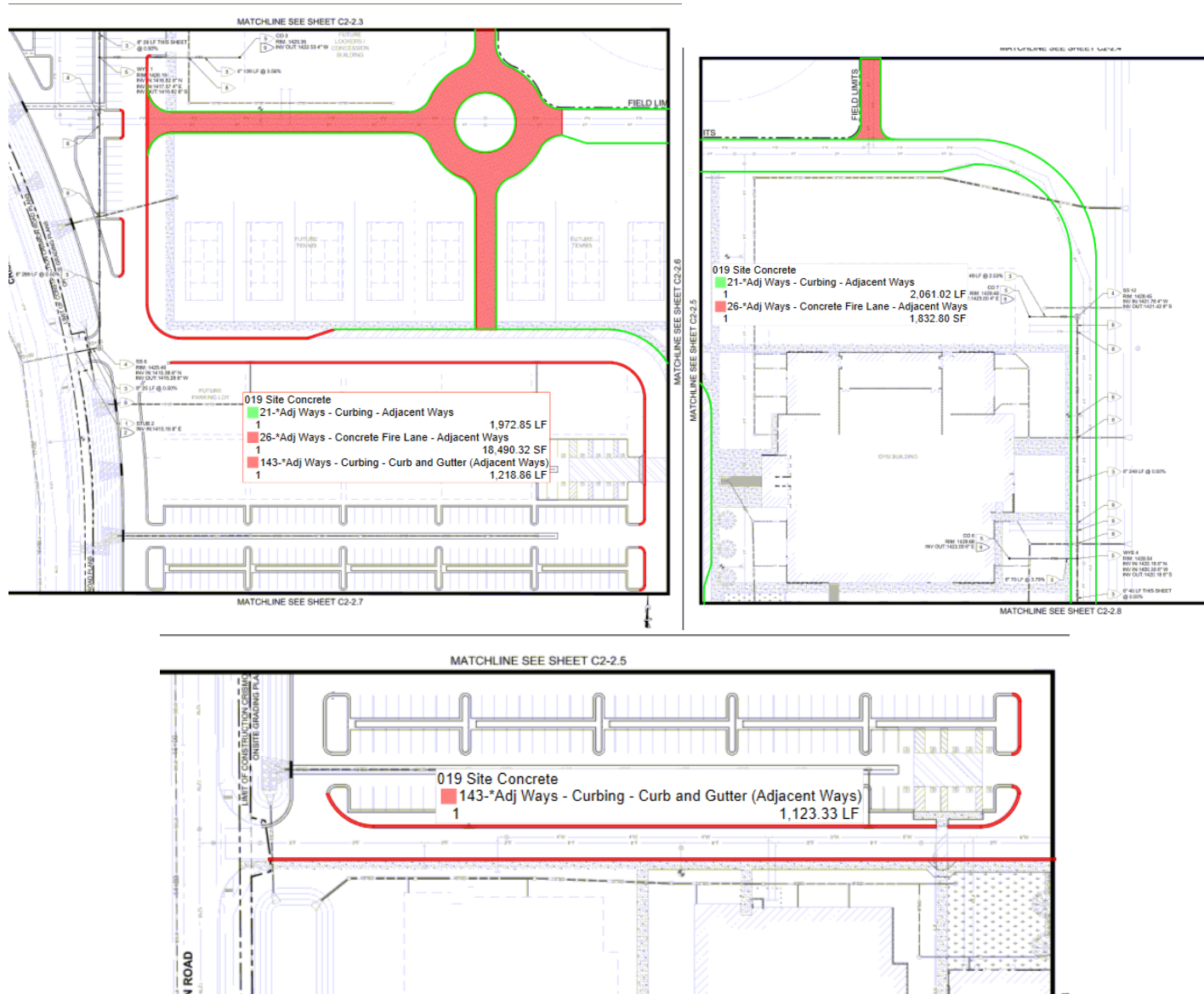




A1.3 Site Concrete Scope of work as outlined on C2-2.3; C2-2.4; C2-2.5; C2-2.6; C2-2.7; C2-2.8; C2-2.9







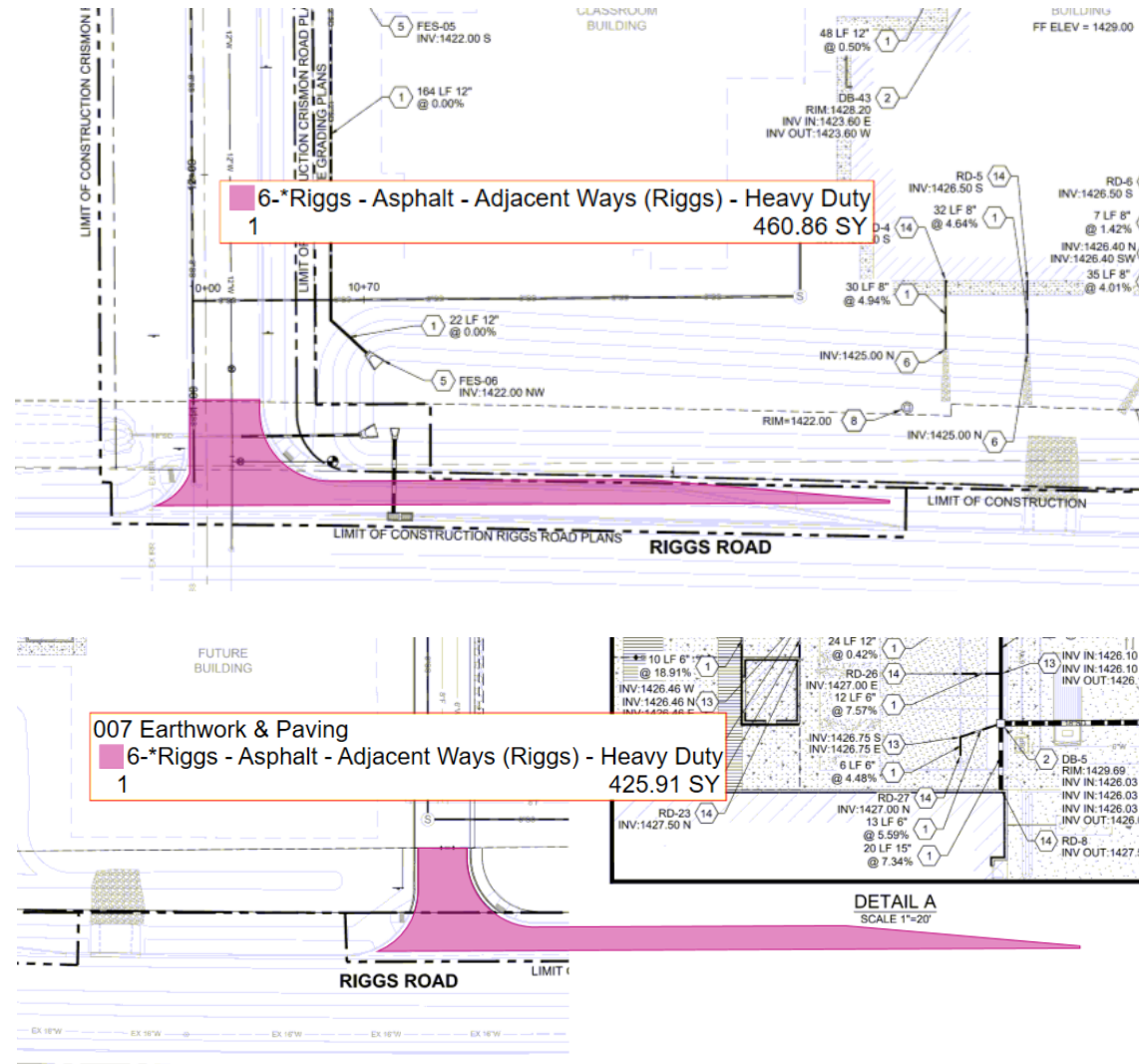






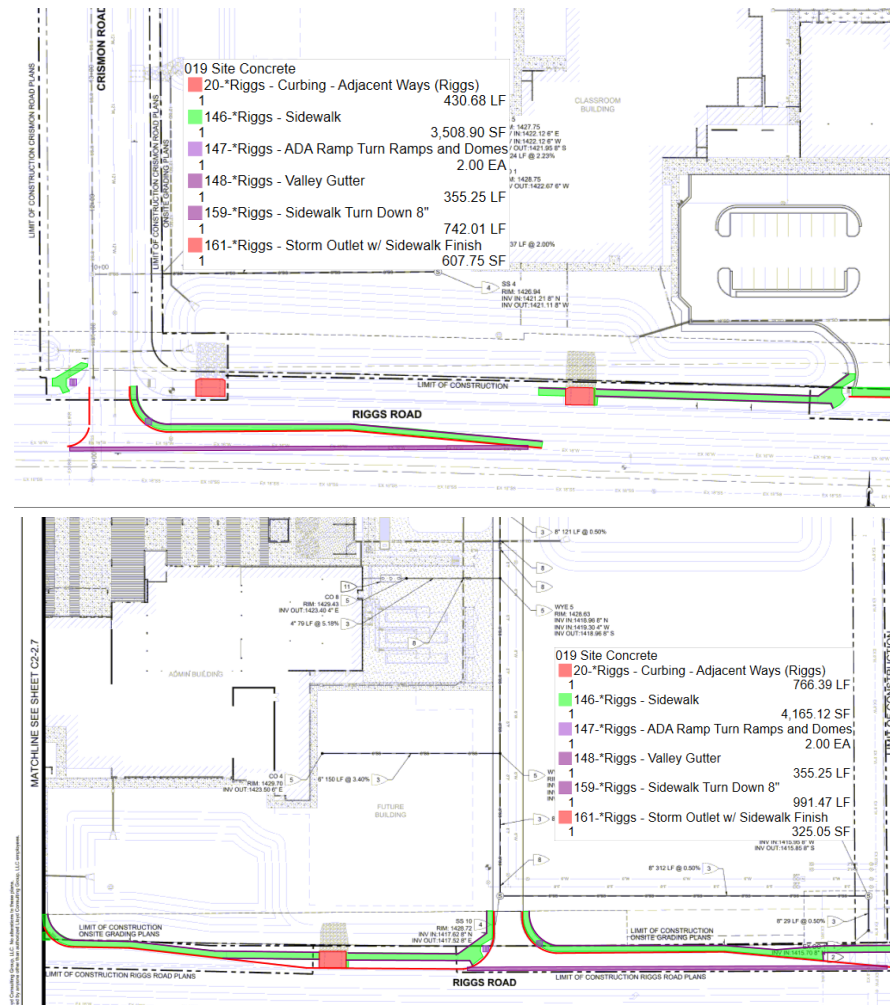
**B. Off-Site Adjacent Ways (Riggs Rd.)**

B1.1 Earthwork & Paving for new turn in lane as outlined on C2-4.7; C2-4.8:



## B1.2 Site Signage & Striping Allowance

## B1.3 Site Concrete as outlined on C2-2.7; C2-2.8; C2-2.9; C0-4.2

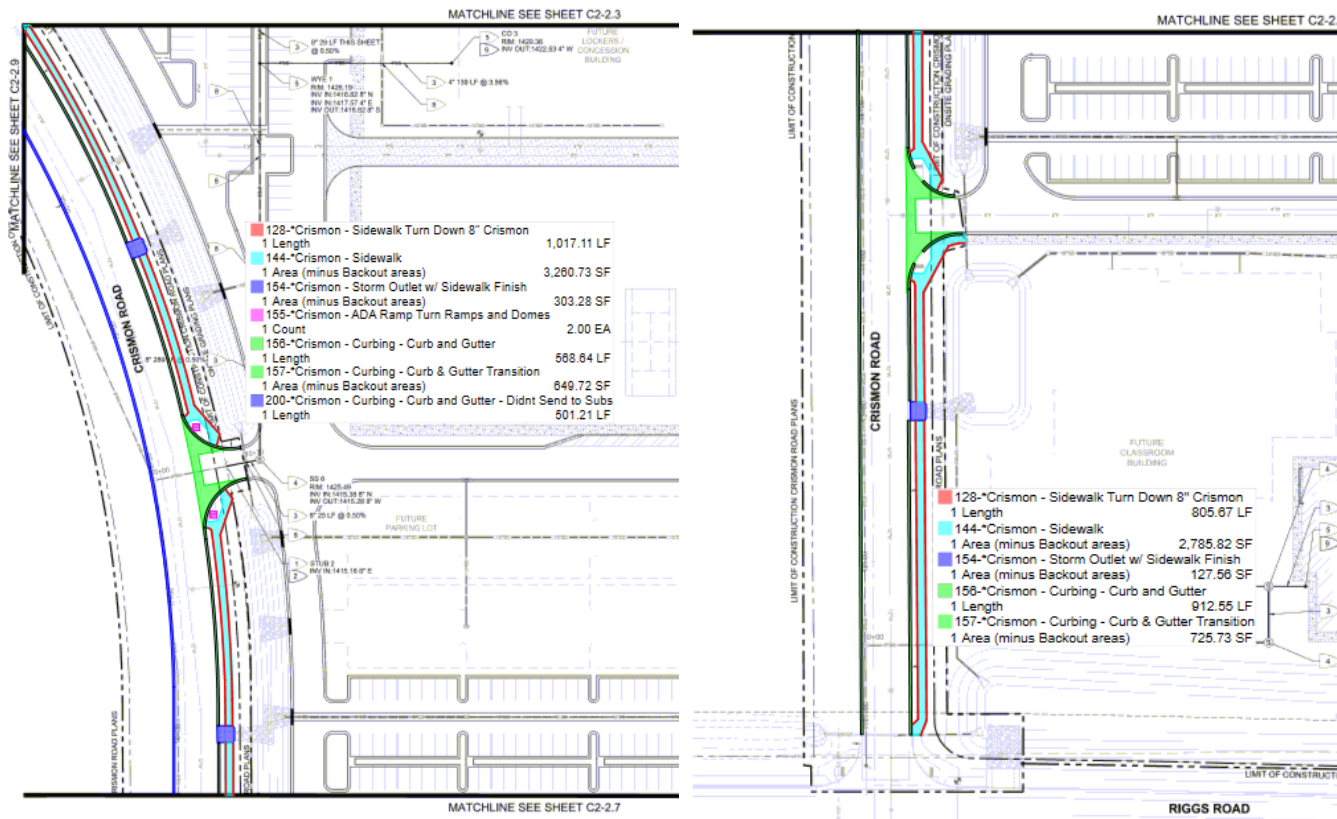


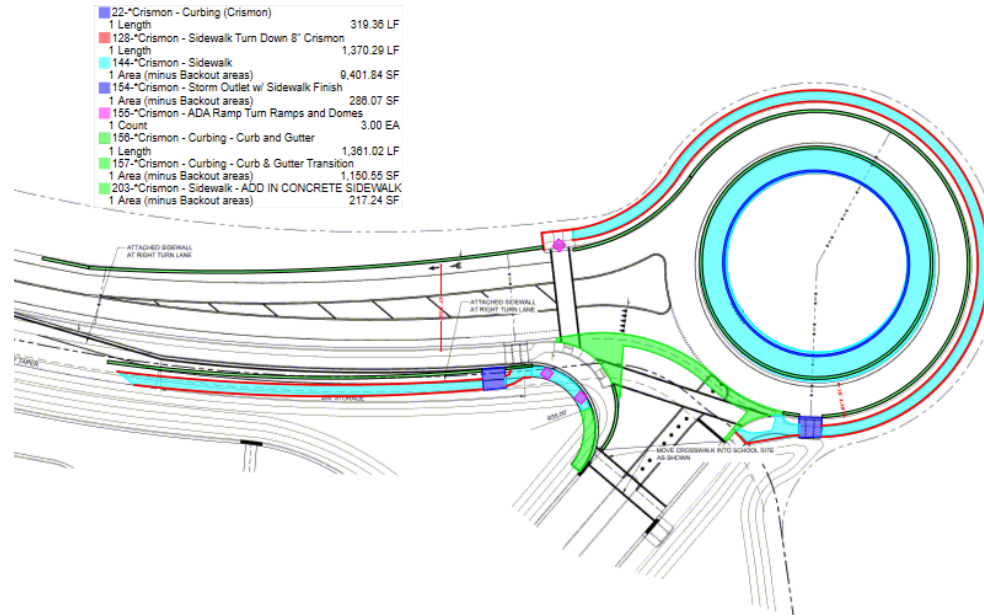


- Asphalt at Crismon to be 2.5" AC on 3.5" AC on 10" ABC
- C1.2 Site Signage & Striping

- Road Striping Allowance

C1.3 Site Concrete:





- ADA Ramp Turn Ramps and Domes (5)
- Curbing (319 LF)
- Curbing, Curb & Gutter Transition (2,526 SF)
- Sidewalk (15,447 SF)
- Sidewalk, Turndown 8" (3,193 LF)
- Storm Outlet with Sidewalk Finish (717 SF)